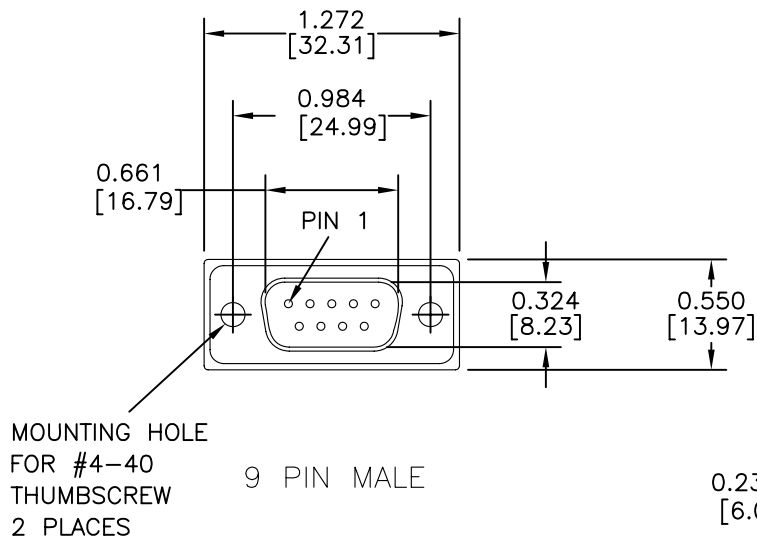
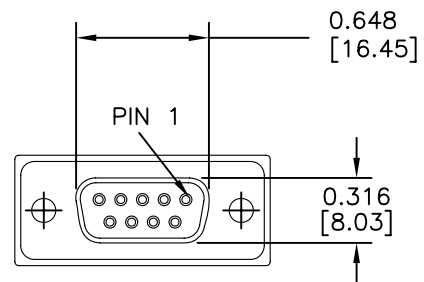
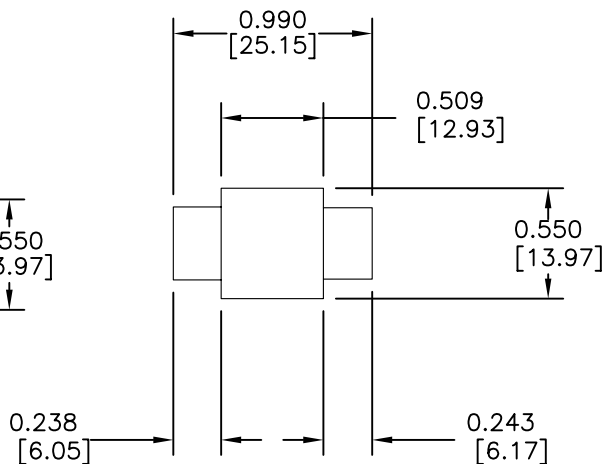


SIZE	FILTER TYPE	CAPACITANCE (pF)		VOLTAGE		CURRENT RATING	CONTACT RESISTANCE	MINIMUM ATTENUATION (dB)							
		MIN	MAX	WVDC	DWV			5 MHz	10 MHz	20 MHz	50 MHz	100 MHz	200 MHz	500 MHz	1 GHz
9	C	5000	10000	100	250	5A	.010 Ohms	10	16	22	30	35	41	50	52



9 PIN MALE



9 PIN FEMALE

NOTES

- 1) SHELLS: STEEL, TIN PLATED.
- 2) CONTACTS: COPPER ALLOY, GOLD PLATED, .000010" TYP.
- 3) INSULATORS AND BACK COVER: PLASTIC, UL94-V0.
- 4) MATING SHELL (MALE SIDE) HAS GROUNDING DIMPLES.
- 5) OPERATING TEMPERATURE: -55°C TO +125°C.
- 6) MARKING: PART NUMBER IS INK STAMPED ON REAR COVER.
- 7) EACH UNIT INCLUDES TWO #4-40 THUMBSCREWS (NOT SHOWN). EACH THUMBSCREW IS CAPTIVE WITHIN THE MOUNTING HOLES.

REV	0																
C.O.	2710																
DATE	08/12/05																

ALL DIMENSIONS ARE IN INCHES (mm)
GENERAL TOLERANCES UNLESS OTHERWISE SPECIFIED
DECIMAL: ± .025 [.64]
ANGLES: ± 1°
CAGE CODE 15717

Micronics
One Plastics Rd. - Corry, PA 16407
(814) 664-7728 FAX (814) 664-4582
www.cormic.com

Dwg By: RPM Date: 08/12/05 Chk'd By: RPM
Scale: 1X File: Sheet:
9 PIN, ADAPTER, 5000 PF "C"
DSC09-300-K00