

Montagearten; Bauhöhe 3.6 mm

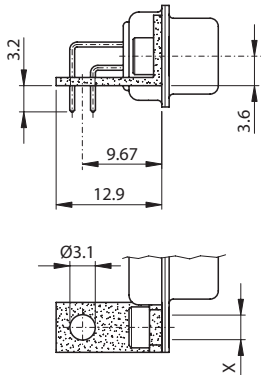
Für Lötstift Eurostyle, 8.4 mm (YC-E)



Assemblies; mounting height 3.6 mm

For solder pin Eurostyle, 8.4 mm (YC-E)

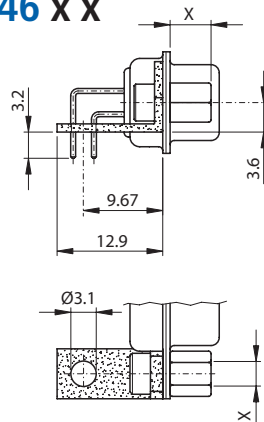
M446 x



Metallwinkel / Metal bracket

M446 D3	Niete / rivet	Ø 3.1 mm
M446 UN	Niete / back nut	UNC4-40
M446 M3	Niete / back nut	M3

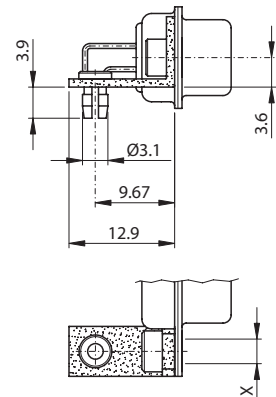
M446 x x



Metallwinkel / Metal bracket

M446 UN B5	Niete / back nut	UNC4-40
	Schraube / screw	5 mm
M446 UN B6	Niete / back nut	UNC4-40
	Schraube / screw	6 mm
M446 M3 B5	Niete / back nut	M3
	Schraube / screw	5 mm
M446 M3 B6	Niete / back nut	M3
	Schraube / screw	6 mm

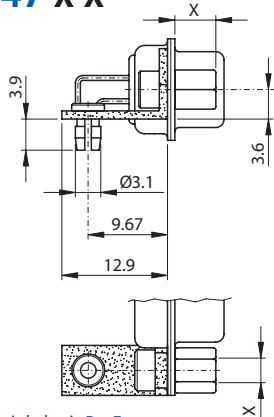
M447 x



Metallwinkel mit P.o.F.
Metal bracket with P.o.F.

M447 D3	Niete / rivet	Ø 3.1 mm
M447 UN	Niete / back nut	UNC4-40
M447 M3	Niete / back nut	M3

M447 x x



Metallwinkel mit P.o.F.
Metal bracket with P.o.F.

M447 UN B5	Niete / back nut	UNC4-40
	Schraube / screw	5 mm
M447 UN B6	Niete / back nut	UNC4-40
	Schraube / screw	6 mm
M447 M3 B5	Niete / back nut	M3
	Schraube / screw	5 mm
M447 M3 B6	Niete / back nut	M3
	Schraube / screw	6 mm

