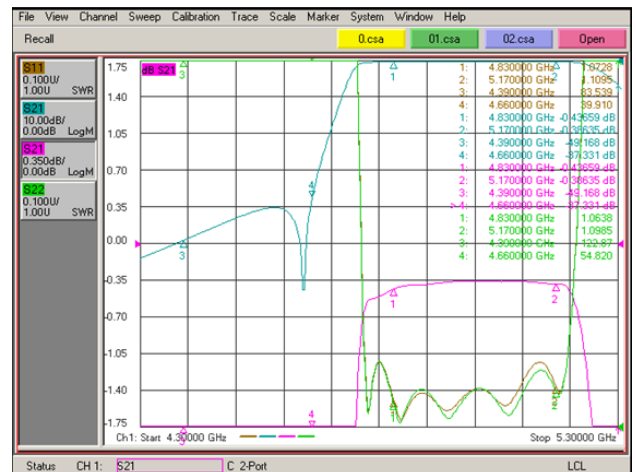
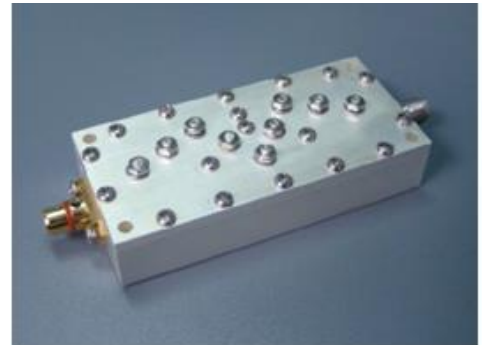
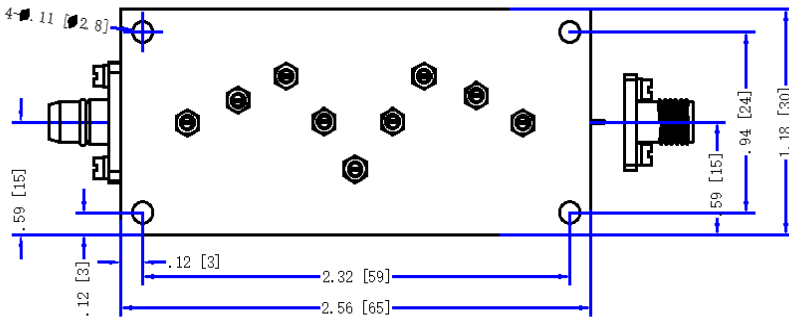
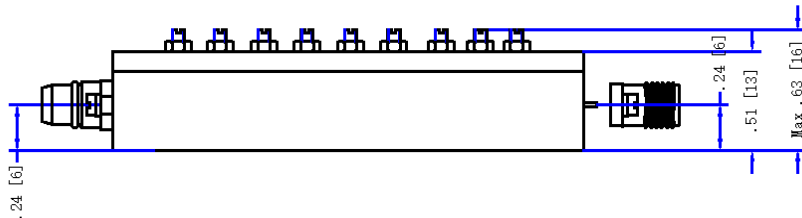




CORRY MICRONICS, INC PRODUCT SPECIFICATION

CMIBF-4990X320-2 C-Band Mini Cavity Filter

Parameters	Specifications
Frequency Range	4830~5150 MHz
Insertion Loss	≤0.45dB
VSWR	≤1.25: 1
Rejection	≥35dB@4390-4640MHz
Phase Balance	±2.5°
Input Power	≤10 W
Temperature	-40°C ~ +70°C
Connectors	SMA Field Replaceable Pin $\varnothing.02'' \times 0.08''$
Surface Finish	Silver Plating
Dimensions	See Attached drawing (All dimensions are in Inches[mm])



CALL OUR SALES DEPARTMENT FOR MORE INFORMATION OR VARIATIONS OF THIS PRODUCT.

Corry Micronics, Inc. One Plastics Rd. - Corry, PA 16407
(724) 940-7556 ext. 138 Fax (724) 940-7707 www.cormic.com

Corry Micronics Inc. herein referred to CMI, believes this information to be accurate, but makes no warranties, expressed or implied as to the accuracy of this document. CMI assumes no liability for any injury, loss, damage, direct or consequential arising from the use of our products. User assumes all risk whatsoever in connection with its intended use. CMI also reserves the right to change this document without notice. 6/25/2018