

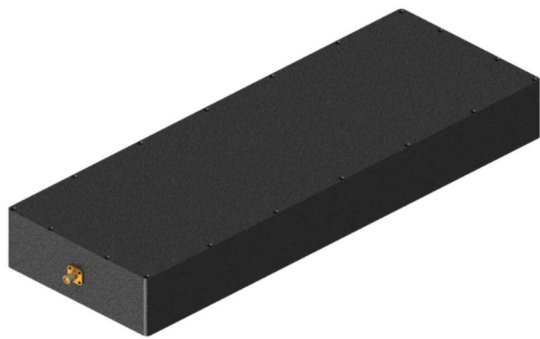


# CORRY MICRONICS, INC PRODUCT SPECIFICATION

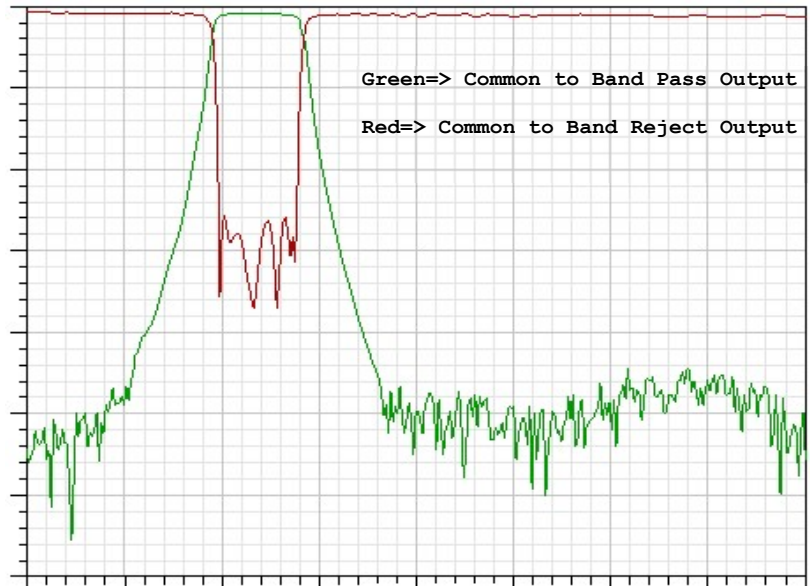
## CMIBFNF-2496-2690 Hybrid Band Pass Band Reject Diplexer

### Electrical Specifications

Parameter	Specification	
	Band Pass	Band Reject
Input Frequency Range	2 ~ 8 GHz	
Frequency Range	2496 ~ 2690 MHz	2496 ~ 2690 MHz
Insertion Loss	2.5 dB Max	2 dB @ 2000 ~ 2350 MHz 4 dB @ 2840 ~ 8000 MHz
Rejection	55 dB @ DC ~ 2350 MHz 55 dB @ 2840 ~ 8000 MHz	40 dB Min
VSWR @ Common Port	2.0:1 Max	
Power	1 Watt	
Connectors	SMA (F)	
Dimensions	See Attached Drawing (All Dimensions are in Inches)	



Transmission Frequency Response



**CALL OUR SALES DEPARTMENT FOR MORE INFORMATION OR VARIATIONS OF THIS PRODUCT.**

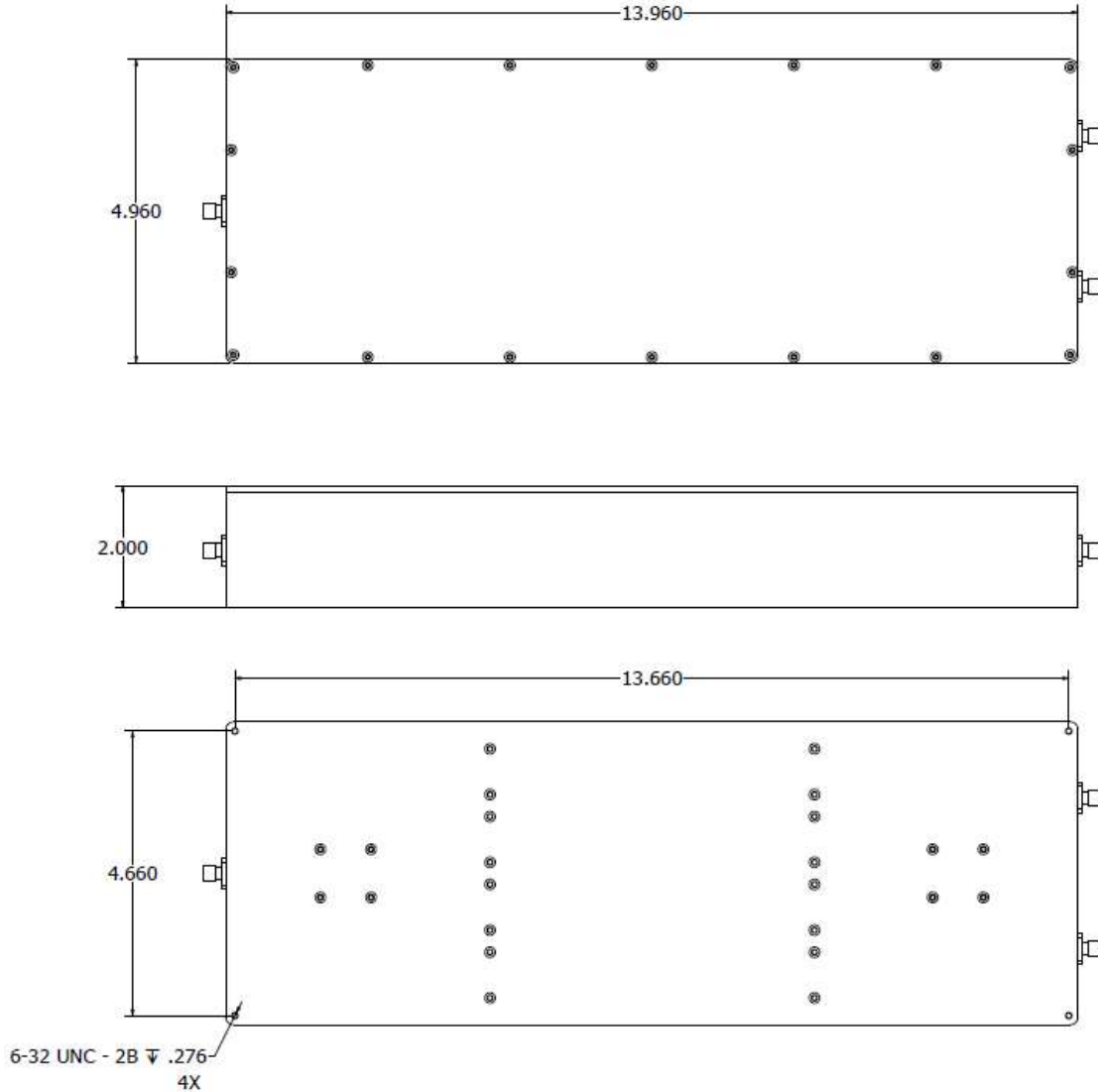
**Corry Micronics, Inc. One Plastics Rd. - Corry, PA 16407**  
**(724) 940-7556 ext. 138 Fax (724) 940-7707 [www.cormic.com](http://www.cormic.com)**

Corry Micronics Inc. herein referred to CMI, believes this information to be accurate, but makes no warranties, expressed or implied as to the accuracy of this document. CMI assumes no liability for any injury, loss, damage, direct or consequential arising from the use of our products. User assumes all risk whatsoever in connection with its intended use. CMI also reserves the right to change this document without notice. 07/31/2020



# CORRY MICRONICS, INC PRODUCT SPECIFICATION

## Outline Drawing



**CALL OUR SALES DEPARTMENT FOR MORE INFORMATION OR VARIATIONS OF THIS PRODUCT.**

**Corry Micronics, Inc. One Plastics Rd. - Corry, PA 16407**

**(724) 940-7556 ext. 138 Fax (724) 940-7707 [www.cormic.com](http://www.cormic.com)**

Corry Micronics Inc. herein referred to CMI, believes this information to be accurate, but makes no warranties, expressed or implied as to the accuracy of this document. CMI assumes no liability for any injury, loss, damage, direct or consequential arising from the use of our products. User assumes all risk whatsoever in connection with its intended use. CMI also reserves the right to change this document without notice. 07/31/2020